

The background features a detailed, golden-hued map of a region, possibly a fantasy world, with various geographical features like rivers, mountains, and cities. The map is overlaid on a dark blue background with a subtle grid and some glowing points. A large, ornate, golden frame surrounds the central text. The text is in a classic serif font, with the main title in a larger size and the subtitle in a smaller size below it.

# THE COSMIC KINGDOM

Week 1: Unveiling the Hidden War



## THE MYTH

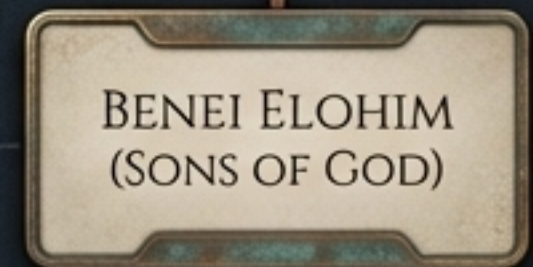
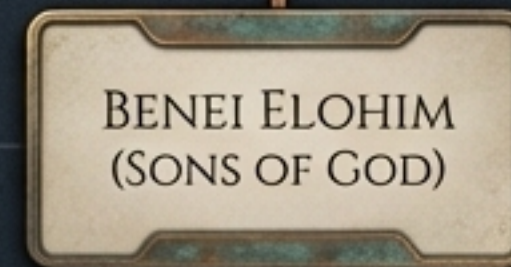
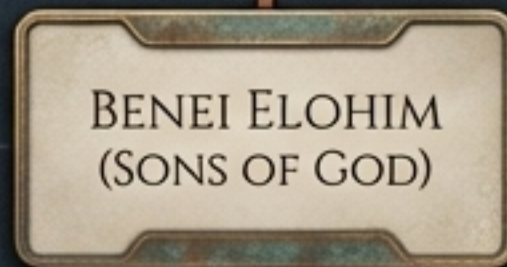
The Bible is a localized story about a moral failure, followed by a list of rules for personal behavior.

## THE REALITY

The text documents a compounding cosmic rebellion. It is the history of a hijacked system, rogue spiritual administrators, and a global legal reclamation project.

## THE MISSION

A rescue operation executed behind enemy lines.



## THE ARCHITECTURE OF HEAVEN

Elohim is not a proper name. It is a place-of-residence descriptor identifying any entity native to the spiritual realm. Heaven operates as a hierarchical government staffed by administrators with free will, creating a constant capacity for cosmic treason.

# THE THREE COMPOUNDING REBELLIONS

THE GARDEN

THE GENESIS 6  
INCURSION

THE BABEL  
DIVORCE



EDEN



MOUNT  
HERMON



PLAINS OF  
SHINAR



HUMAN  
DISOBEDIENCE &  
MORAL FAILURE



GENETIC  
SABOTAGE &  
HYBRIDIZATION



CENTRALIZED  
TYRANNY &  
INDEPENDENCE



EXILE FROM  
THE PRESENCE



THE FLOOD  
QUARANTINE



THE COSMIC  
DISINHERITANCE

# A SURGICAL QUARANTINE



## THE INFECTION

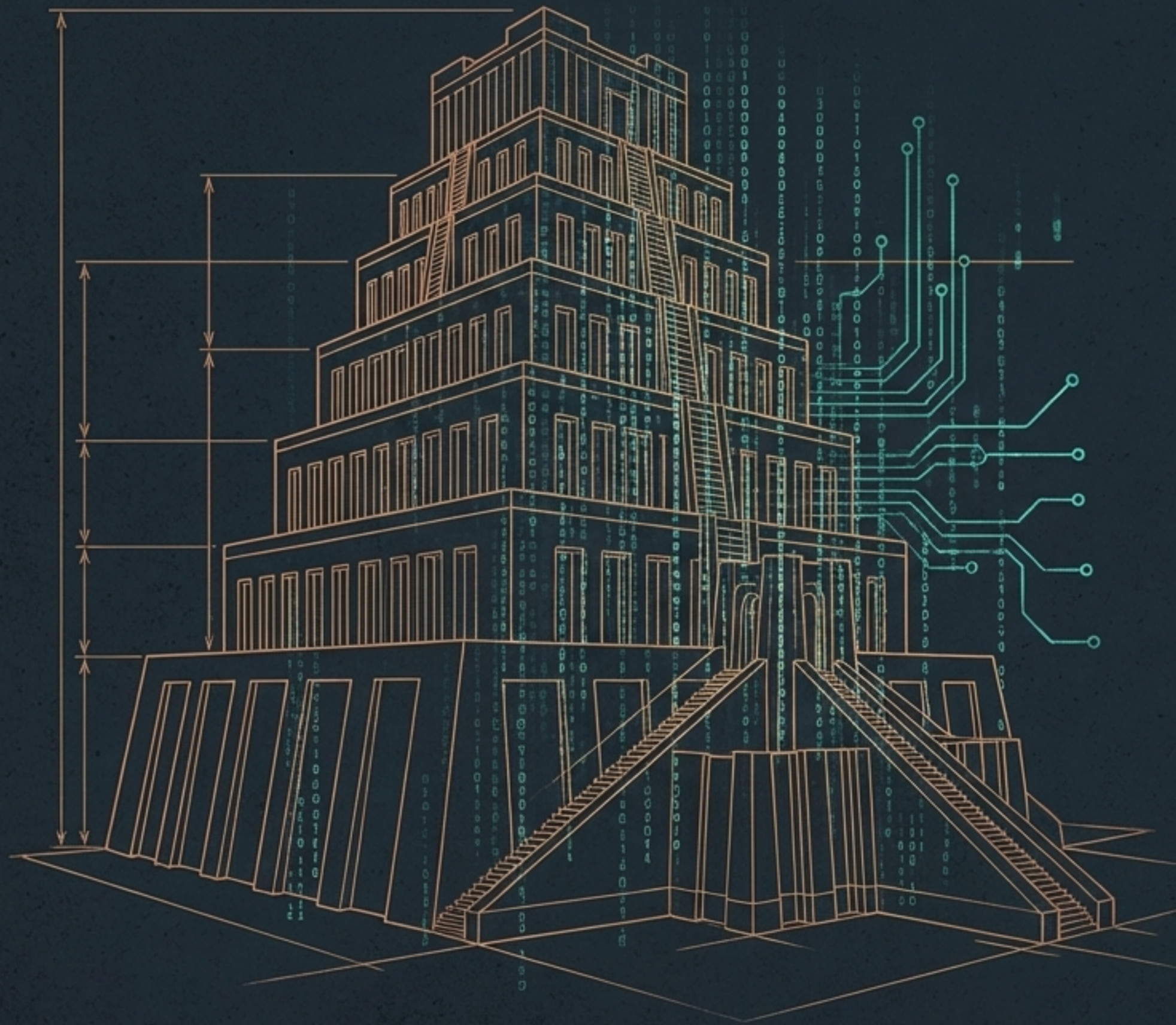
Rebellious Watchers hybridized with humanity, producing the Nephilim—dangerous biological anomalies that violated the cosmic order.

## THE PATIENT

Noah was perfect in his generations (tamim)—an unblemished genetic pedigree.

## THE RESET

The Flood was not arbitrary anger; it was a hard reset to wash away the infection, save the patient, and preserve the human bloodline.



# THE GENESIS OF TYRANNY: 4,000 BC

Nimrod (Enmerkar, the Lord Hunter) did not hunt animals; he hunted the autonomy of man.

## THE MACHINE

Babel was not a construction project gone wrong. It was the birth of the world's first open-air prison.



## THE OPERATING SYSTEM

A deliberate attempt to synchronize human labor, language, and worship into a single, centralized identity system.



## THE GOAL

To code a self-contained reality entirely independent of the Creator.

“TO CONTROL A POPULATION, YOU MUST STANDARDIZE THEM.”

## THE STONE



### LIVING STONES

Formed by God. Irregular, unique, and requires the patient, skilled hand of a Master Mason to fit into a structure while maintaining individual character.

## THE BRICK



### STANDARDIZED BRICKS

Man-made. Sacrifices individual identity for a role in the collective machine. Glued with bitumen to judgment-proof their system against another flood.

# THE COSMIC DIVORCE DECREE

## THE REASSIGNMENT:

Yahweh disowned the 70 rebellious nations, handing their management over to lesser spiritual beings from His Divine Council.

## THE COUNTER-PLAN:

He immediately called Abraham out of the occupied territories to build a brand new, private estate from scratch: Israel.

CONTRACT

When the Most High  
divided the nations,  
he set up boundaries  
according to the number of

<sup>13</sup> (Dead Sea Scrolls)

**Sons of God**  
~~Sons of Israel.~~"

# SUPERNATURAL GEOGRAPHY & THE ROGUE ADMINS



## 1 COSMIC IDENTITY THEFT


The ancient pantheons (Zeus, Ra, Marduk) were not myths. They were the rebellious members of the Divine Council demanding worship.

## 2 THE COUNTERFEIT HOUSEHOLD

They hijacked the borders and built empires based on war, blood sacrifice, and enslavement.

## 3 THE TURF WAR

The entire Old Testament is a sprawling conflict. Yahweh, working through one small nation, pushing back against the occupied map.



## THE SENTENCING HEARING (PSALM 82)

### THE LAWSUIT:

Yahweh brings a formal charge against the rogue gods for their failure to defend the poor and the fatherless.



### THE ACKNOWLEDGMENT:

He legally acknowledges their status as Elohim.



### THE VERDICT:

Their divine tenure is permanently revoked.



### THE SENTENCE:

You shall die like mortal men.



### THE CATCH:

A legal judgment requires an executor to arrive on the ground to enforce it.

# THE COUNTER-INVASION BEGINS



## 1 GROUND ZERO:

**Ground Zero:** Jesus takes His disciples to Caesarea Philippi at the base of Mount Hermon—the exact location where the Genesis 6 rebellion began.

## 2 THE DECLARATION:

He formally announces the invasion, declaring the gates of hell shall not prevail.

## 3 THE TACTICS:

Every healing and exorcism was a tactical raid. Binding the strong man and plundering the rogue administrators' household.

# A TECHNICAL TAKEOVER AT THE CROSS



## 1 LEGAL DISARMAMENT

The rogue managers orchestrated the crucifixion, walking into a massive trap. The cross was a public disarming of the principalities.

## 2 VOIDING THE CONTRACT

By sacrificing Himself as an innocent man, Jesus broke the legal claim those dark powers held over humanity.

## 3 SYSTEM OVERRIDE

The contract holding the nations hostage was rendered completely void. Total systemic override.

## TACTICAL ANCIENT ARCHIVE



Babel: The Cosmic Divorce



Pentecost: Reversing the Scattering

### The Strategic Broadcast

Pentecost was the direct, engineered sequel to Babel. Speaking the languages of the 70 occupied nations was a strategic broadcast back into enemy territory. The message: The divorce is over. The borders are down. The King is reclaiming His children.



# The Convergence of the Epochs

## The 15th Epoch

History is a mechanism reaching its limit. We are sitting at the end of the 15th Epoch of human history.


## The AI Metaphor

In machine learning, the 15th epoch is the threshold of "overfitting"—where a model stops learning truth and starts memorizing noise, becoming corrupted.

## Midnight is Here

The Architect is preparing the 'early stopping command' to intervene and preserve humanity before Nimrod's centralized system fully rebuilds itself.

# Your Role in the Rescue Mission

The background illustration shows a superhero silhouette with a cape walking on a path of red bricks. The path is partially broken, with some bricks missing. In the background, there is a large, glowing, organic stone wall with many small, glowing yellow and orange spots. The overall scene is set in a dark, cavernous environment with a blue and yellow color palette.

## Reject the Brick

**Reject the Brick:** You are not a standardized unit. Any system that requires you to trade your God-given autonomy for state security is a trap.

## Embrace the Stone

**Embrace the Stone:** You are a living stone, uniquely fitted for a house that cannot be shaken.

## Join the Mission

**Join the Mission:** Understand the times. Prepare your family. The King is here, and we are winning back the map.